

PARCC

is Better for Students

PARCC is a modern test that is replacing the previous state standardized test for English and Math. It not only evaluates a student's progress, but also provides better information for teachers and parents to identify where a student needs help, or is excelling, so they are able to enhance instruction to meet individual student needs.

Falling behind

According to the Organisation for Economic Co-operation and Development (OECD) Program for International Student Assessment (PISA) reports from 2000 to 2012, the United States has fallen significantly in a worldwide education ranking in Mathematics and Reading.



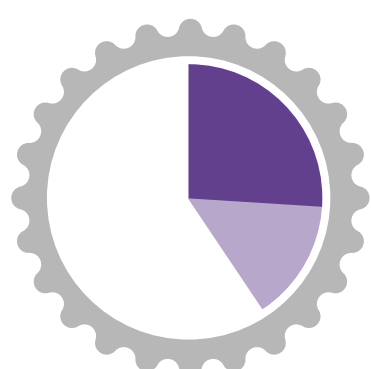
Mathematics

2000 **18th**
2012 **26th**



Reading

2000 **15th**
2012 **17th**



Currently
28-40%

of first-time undergraduates enroll in at least one remedial course. These students are highly unlikely to complete a degree or certificate on time and far too many will not complete a degree at all.

More than half of employers nationwide have an open job for which they cannot find qualified candidates.



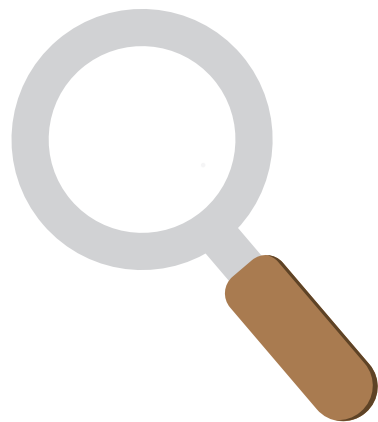
8 in 10
have difficulty filling positions altogether.

Getting back on track

Raising standards and measuring student's progress through quality assessment is key to solving the challenge of preparing our children for college and career success.

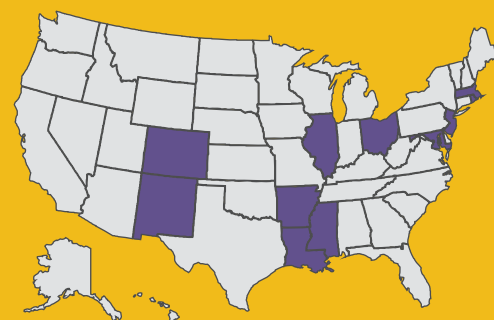


More than **2,000 educators** from the PARCC states have reviewed items and been involved in all of the steps of developing the assessment.



Each test question goes through **seven rounds of review** by educators and content experts.

12 states will administer PARCC tests in 2015, reaching **five million students**.



Students will engage in the tests a few hours in early spring and a few hours in late spring.*

PARCC tests not only evaluate a student's progress, but show teachers and parents where a student needs extra help or is excelling. The time spent on tests is much less than students spend on other school-related activities each year that don't advance their learning.

Average time on the school bus:



147
hours/year

Average time transitioning from class to class:



90
hours/year

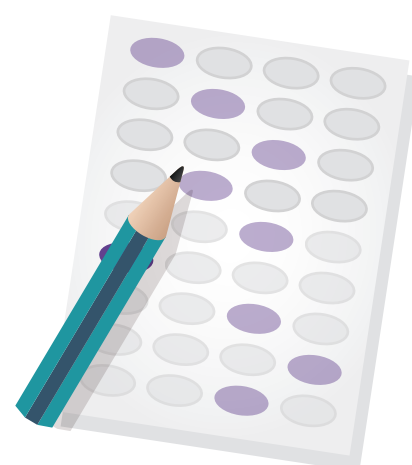
Average time waiting in the lunch line:



39
hours/year

* The estimated time most students will take to complete the PARCC assessment is **6½ hours** in grade 3 to **7½ hours** in grade 11. Students who need more time will be allowed as much as 9¾ hours in grade 3 to 11½ hours in grade 11. Note: The total allotted time for the assessments is less than 1% of instructional time in most districts.

Say goodbye to
teaching to the test!



When students **succeed in the classroom**, they are **more likely to succeed in life** and positively contribute to the communities where they live and learn.